



# VELOCE PROFILE

PHOTOMETRY



**AYRTON**

Digital Lighting





<b>Total Flux</b>	43,000 lm (@zoom 128, fan mode STAGE, Sphere)
-------------------	---

<b>CCT @ light source engine</b>	8100 (±400K)
----------------------------------	--------------

<b>CCT @ open</b>	6500 (±300K)
-------------------	--------------

<b>Ra @ open</b>	70 (±2)
------------------	---------

<b>TLCI</b>	48
-------------	----

<b>TM-30</b>	Rf: 71 Rg: 94
--------------	---------------

Fan Mode	Noise Level (dBA)	by Goniometer (lm)	by Sphere (lm)
<b>Auto</b>	43.5	35500	42500
<b>Stage</b>	47.6	36000	43000
<b>Silence</b>	36.1	25800	31000
<b>Super Silence</b>	32.5	14100	17000

Note: noise measured @ 1m distance, static status, ambient 31 dBA.

<b>Voltage / Power</b>	100-240 V, 50-60 Hz	1300 W
------------------------	---------------------	--------

<b>Fixture Dimension / Weight</b>	404 x 757 x 366 mm	40.5 kg
-----------------------------------	--------------------	---------

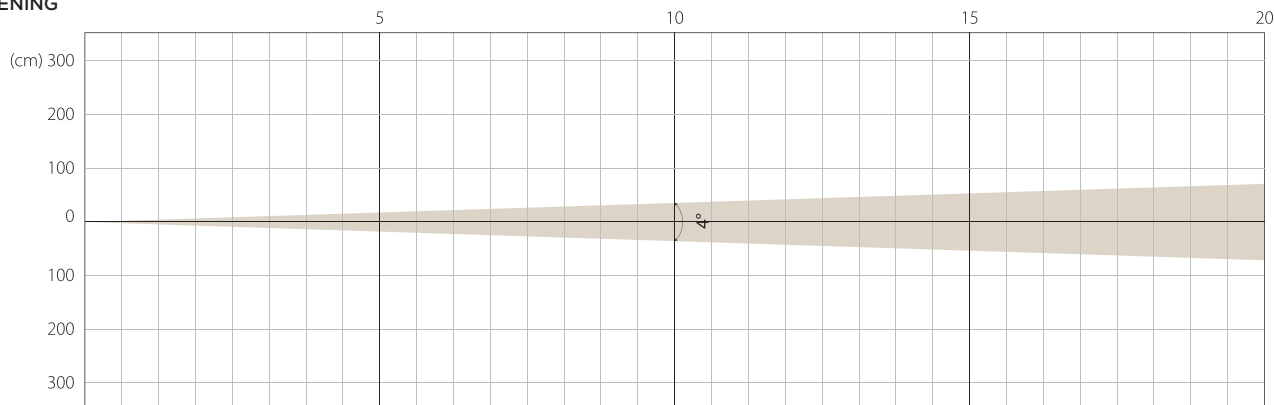
<b>Packing Dimension / Weight</b>	695 x 740 x 515 mm	55.5 kg
-----------------------------------	--------------------	---------

# AUTO MODE

## NATIVE CRI GREATER THAN 70

MIN ZOOM

BEAM OPENING

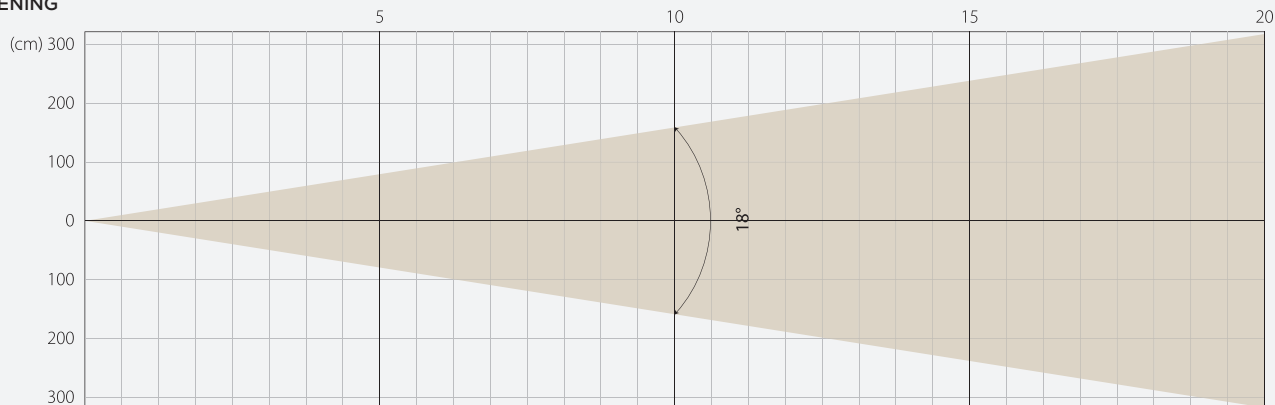


INTENSITY

Distance (m)	5		10		15		20	
unit	Lux	Diameter	Lux	Diameter	Lux	Diameter	Lux	Diameter
White	152890	0.35	38222	0.7	16988	1.05	9556	1.4

MIDDLE ZOOM

BEAM OPENING

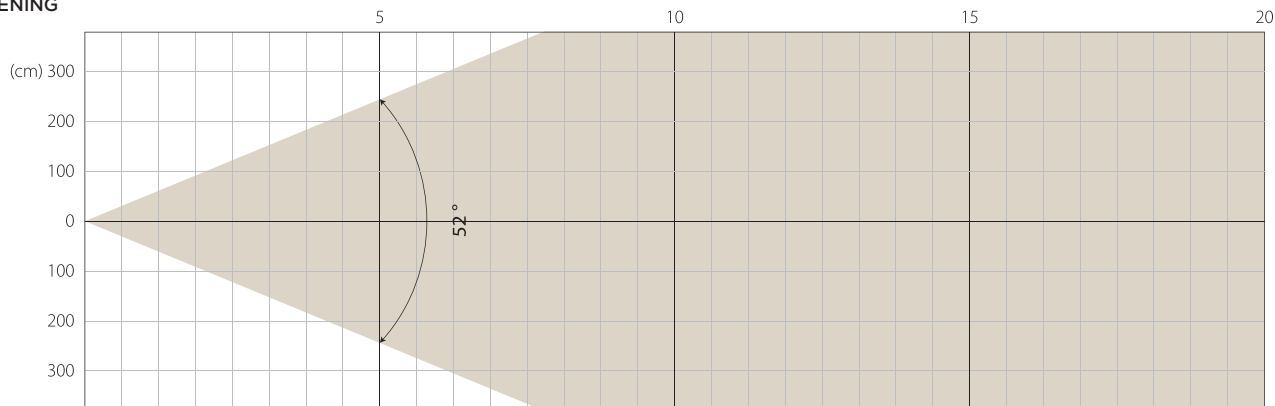


INTENSITY

Distance (m)	5		10		15		20	
unit	Lux	Diameter	Lux	Diameter	Lux	Diameter	Lux	Diameter
White	23786	1.58	5947	3.17	2643	4.75	1487	6.43

MAX ZOOM

BEAM OPENING



INTENSITY

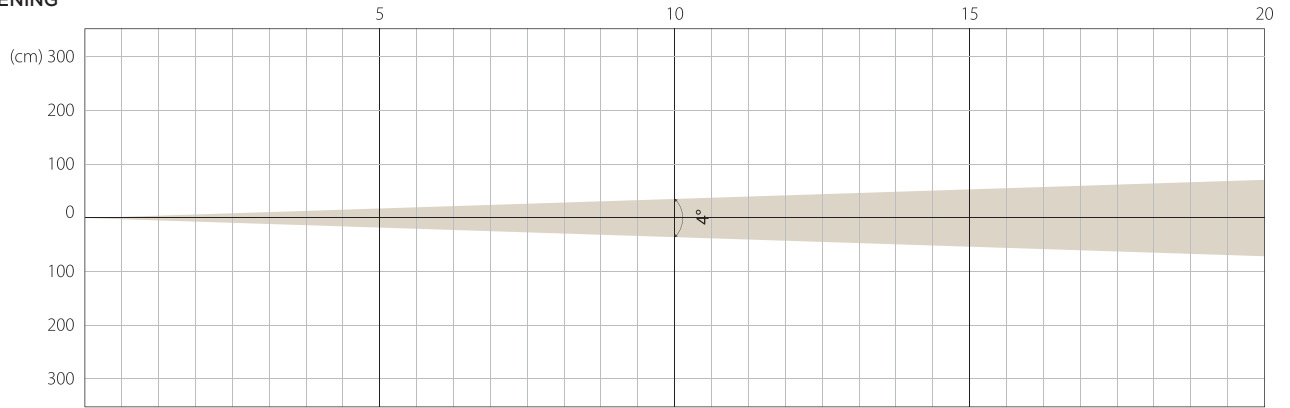
Distance (m)	5		10		15		20	
unit	Lux	Diameter	Lux	Diameter	Lux	Diameter	Lux	Diameter
White	2764	4.88	691	9.75	307	14.63	173	19.51

# STAGE MODE

NATIVE CRI GREATER THAN 70

MIN ZOOM

BEAM OPENING

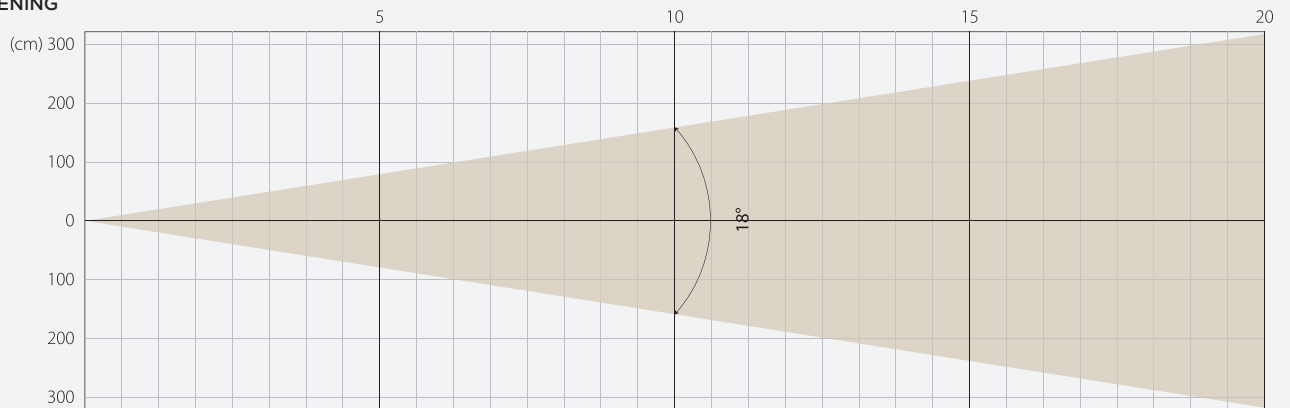


INTENSITY

Distance (m)	5		10		15		20	
unit	Lux	Diameter	Lux	Diameter	Lux	Diameter	Lux	Diameter
White	157126	0.35	39282	0.7	17458	1.05	9820	1.4

MIDDLE ZOOM

BEAM OPENING

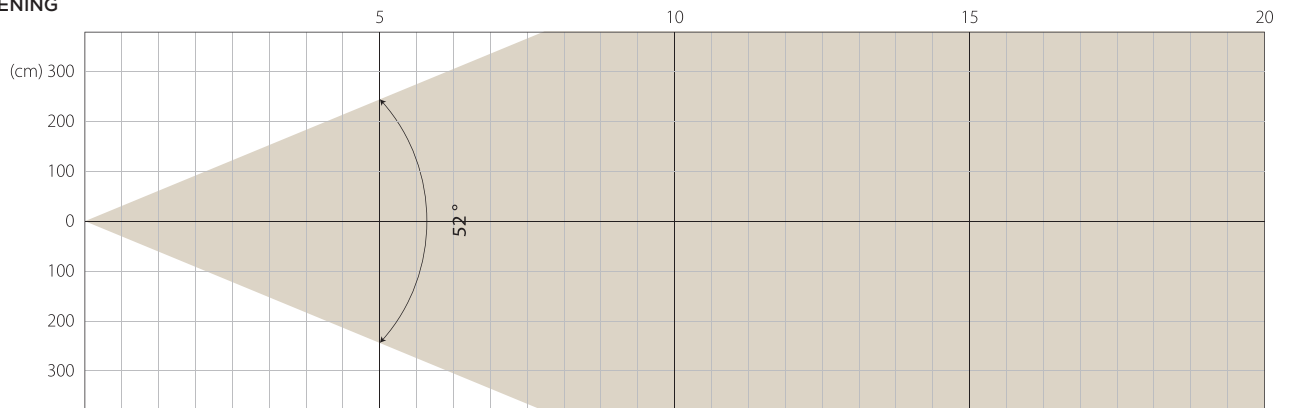


INTENSITY

Distance (m)	5		10		15		20	
unit	Lux	Diameter	Lux	Diameter	Lux	Diameter	Lux	Diameter
White	22344	1.58	5586	3.17	2483	4.75	1397	6.43

MAX ZOOM

BEAM OPENING



INTENSITY

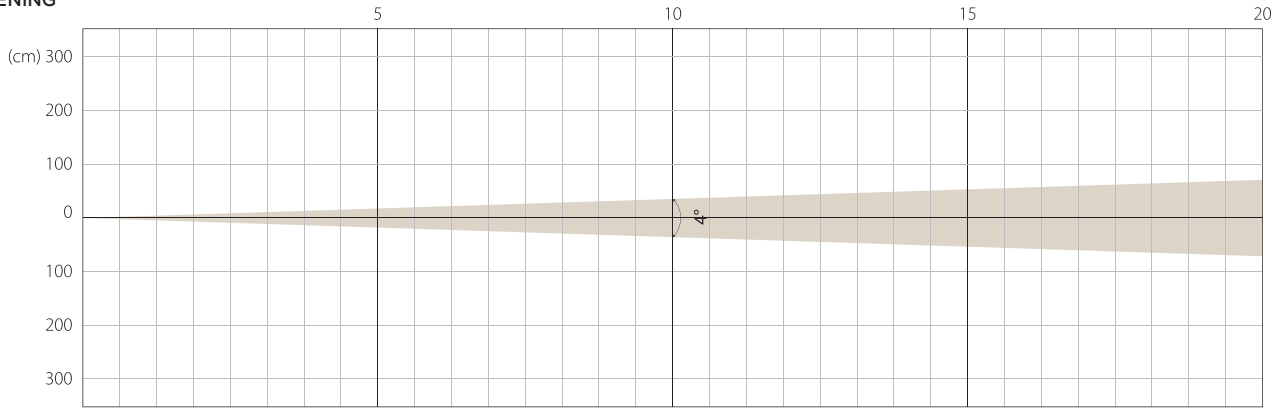
Distance (m)	5		10		15		20	
unit	Lux	Diameter	Lux	Diameter	Lux	Diameter	Lux	Diameter
White	2823	4.88	706	9.75	314	14.63	176	19.51

# SILENCE MODE

NATIVE CRI GREATER THAN 70

MIN ZOOM

BEAM OPENING

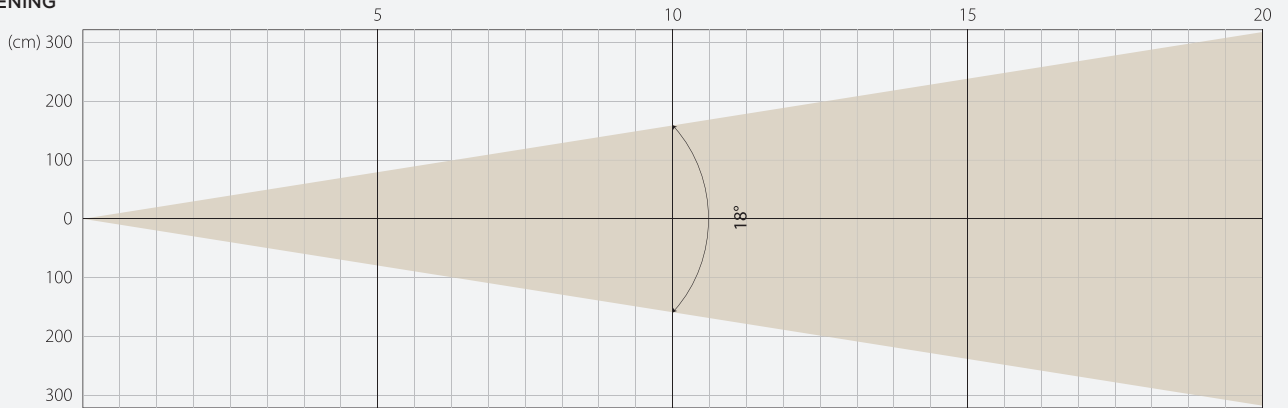


INTENSITY

Distance (m)	5		10		15		20	
unit	Lux	Diameter	Lux	Diameter	Lux	Diameter	Lux	Diameter
White	108659	0.35	27165	0.7	12073	1.05	6791	1.4

MIDDLE ZOOM

BEAM OPENING

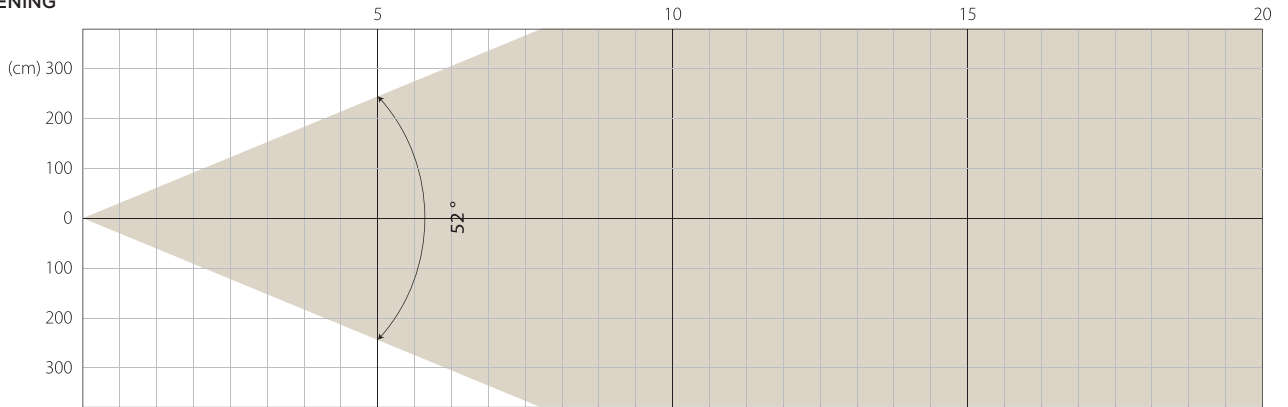


INTENSITY

Distance (m)	5		10		15		20	
unit	Lux	Diameter	Lux	Diameter	Lux	Diameter	Lux	Diameter
White	16949	1.58	4237	3.17	1883	4.75	1059	6.34

MAX ZOOM

BEAM OPENING



INTENSITY

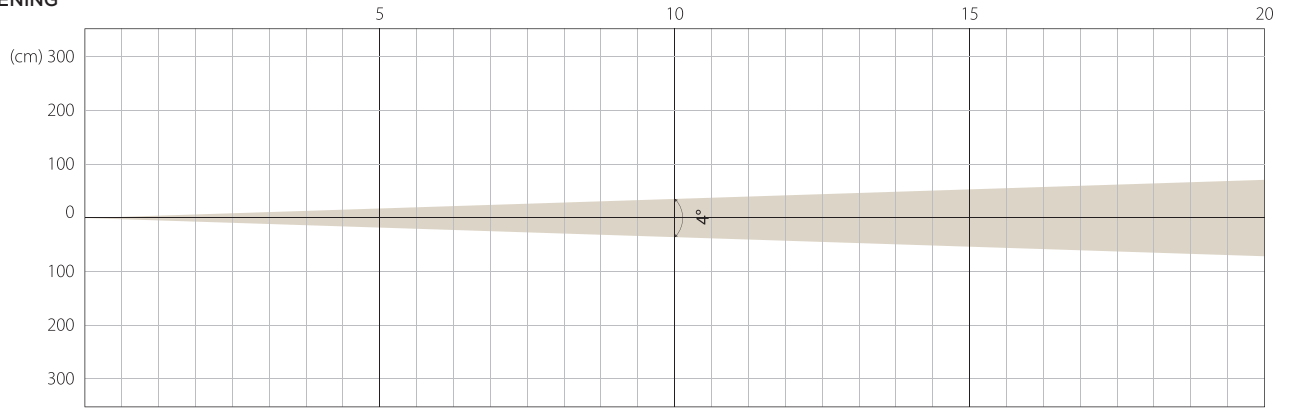
Distance (m)	5		10		15		20	
unit	Lux	Diameter	Lux	Diameter	Lux	Diameter	Lux	Diameter
White	1925	4.88	481	9.75	214	14.63	120	19.51

# SUPER SILENCE MODE

NATIVE CRI GREATER THAN 70

MIN ZOOM

BEAM OPENING

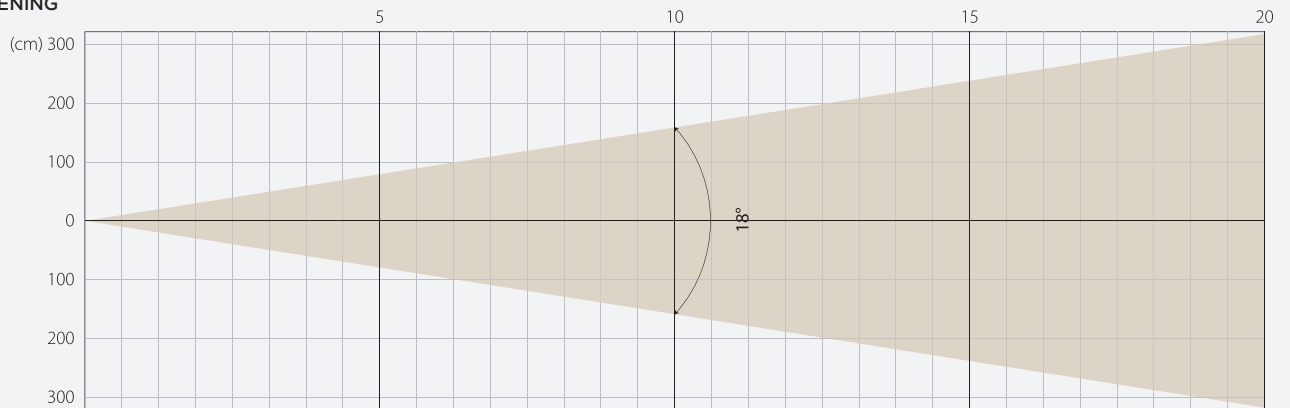


INTENSITY

Distance (m)	5		10		15		20	
	Lux	Diameter	Lux	Diameter	Lux	Diameter	Lux	Diameter
White	69470	0.35	17367	0.7	7719	1.05	4342	1.4

MIDDLE ZOOM

BEAM OPENING

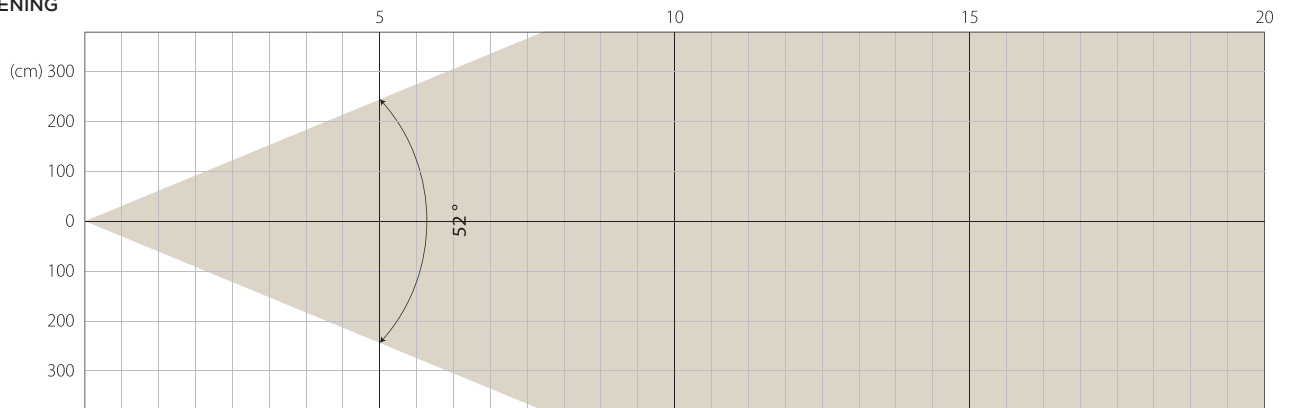


INTENSITY

Distance (m)	5		10		15		20	
	Lux	Diameter	Lux	Diameter	Lux	Diameter	Lux	Diameter
White	9080	1.58	2270	3.17	1009	4.75	567	6.34

MAX ZOOM

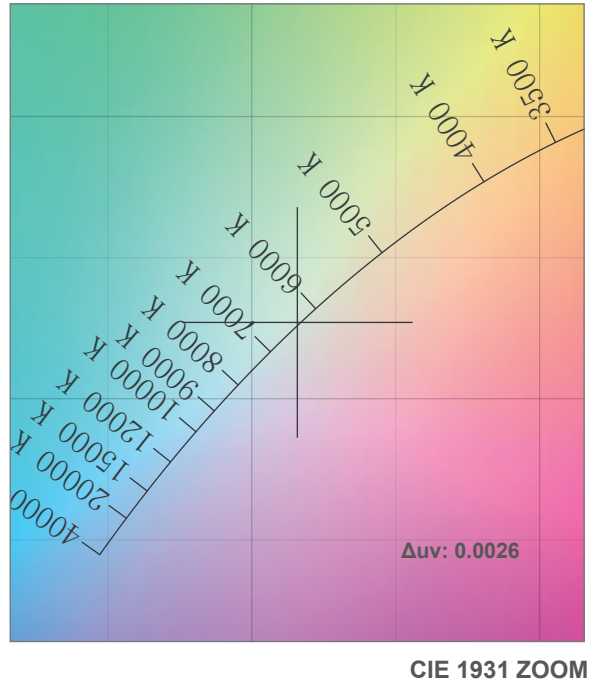
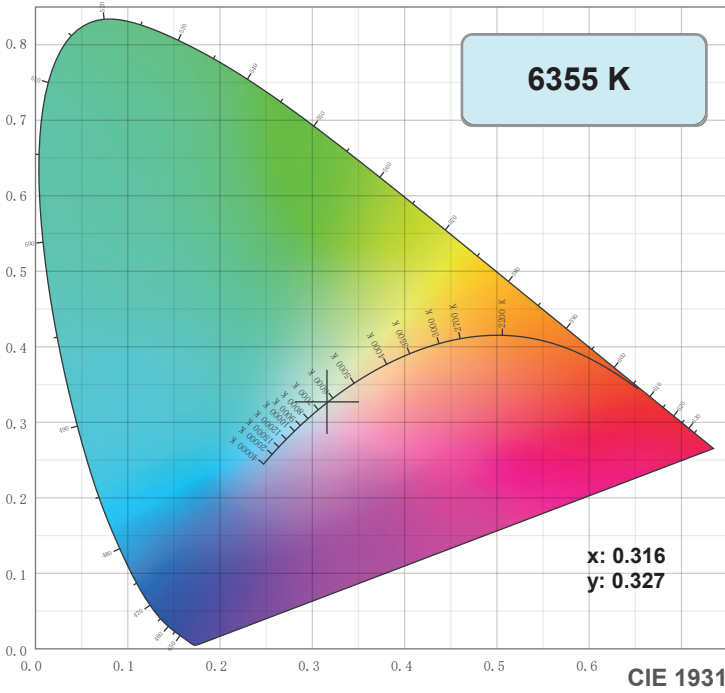
BEAM OPENING



INTENSITY

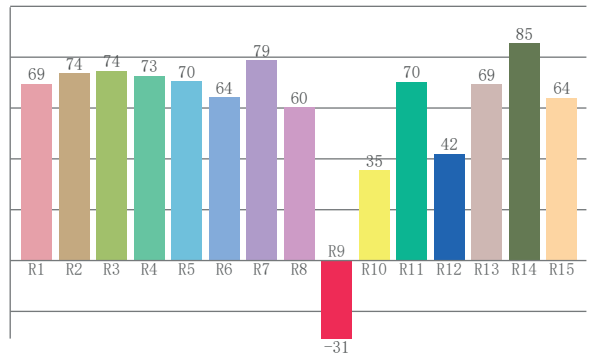
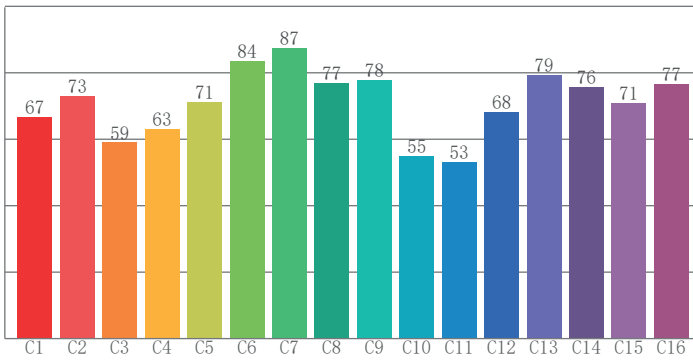
Distance (m)	5		10		15		20	
	Lux	Diameter	Lux	Diameter	Lux	Diameter	Lux	Diameter
White	1050	4.88	262	9.75	117	14.63	66	19.51

# COLOR DETAILS



**TM-30: 70.5**

**CRI: 70.5 (R1-R8)**



**CRI R values, only R1-R8 are used to calculate final CRI value**

R1	R2	R3	R4	R5	R6	R7	R8	R9	R10	R11	R12	R13	R14	R15
69.4	73.7	74.5	72.8	70.5	64.3	78.7	60.2	-30.7	35.4	70.3	41.8	69.3	85.4	64.0

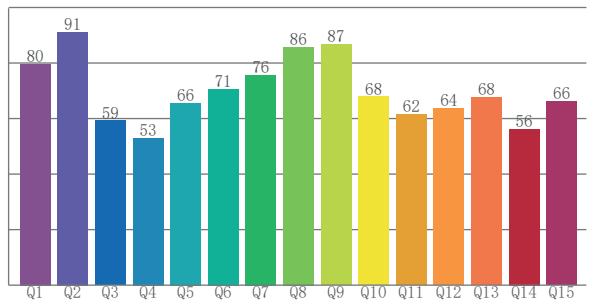
**TM30 C values, 16 binned values out of total of 99 C values**

C1	C2	C3	C4	C5	C6	C7	C8	C9	C10	C11	C12	C13	C14	C15	C16
66.6	72.9	59.0	63.2	71.3	83.6	87.3	76.9	77.7	55.1	53.1	68.3	79.2	75.8	70.8	76.6

**CQS Q values**

Q1	Q2	Q3	Q4	Q5	Q6	Q7	Q8	Q9	Q10	Q11	Q12	Q13	Q14	Q15
79.7	91.1	59.2	53.0	65.6	70.6	75.7	85.8	86.7	67.9	61.5	63.7	67.6	56.3	66.2

**CQS: 68.0**



## Color parameters

Color temperature	Color rendering index	Red component	Color fidelity	Color gamut	Color quality scale	Color coordinate cie 1931	Color coordinate cie 1931	Color coordinate	Color coordinate	Color deviation from black body
CCT	CRI	CRI R9	TM30 Rf	TM30 Rg	CQS	x	y	u	v	Δuv
6355 K	70.5	-30.7	70.5	94.2	68.0	0.316	0.327	0.201	0.312	0.0026

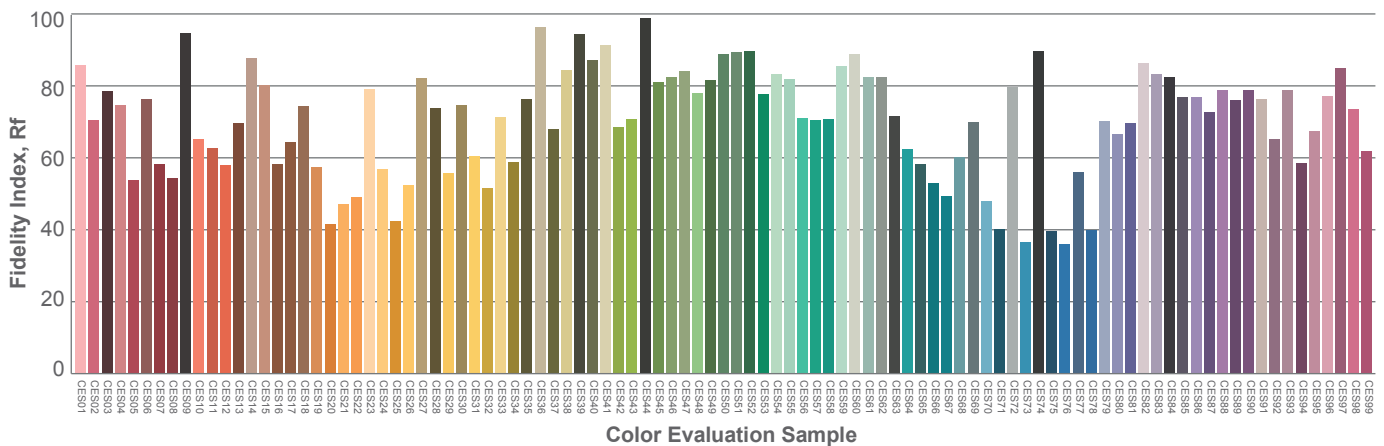
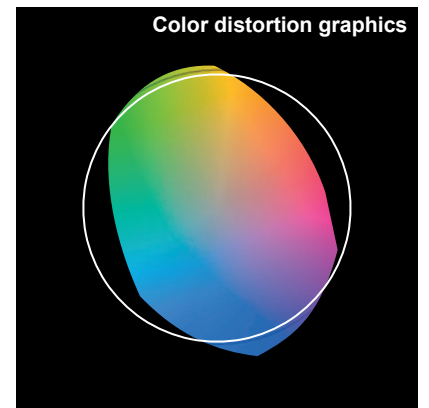
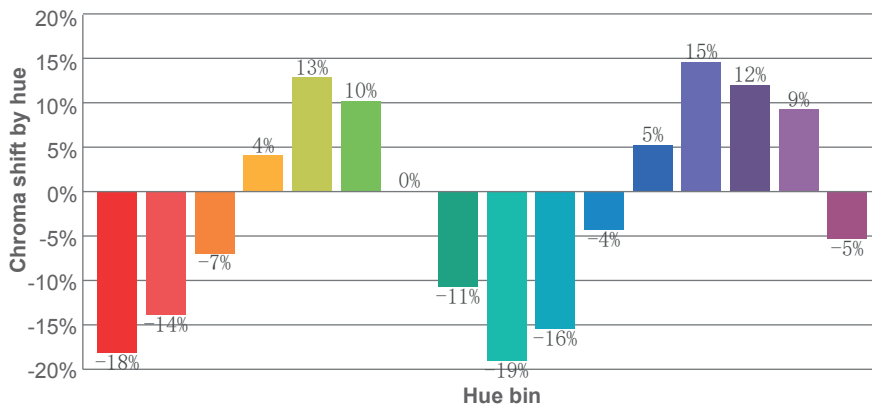
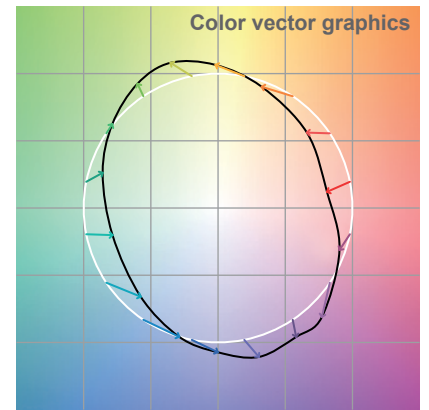
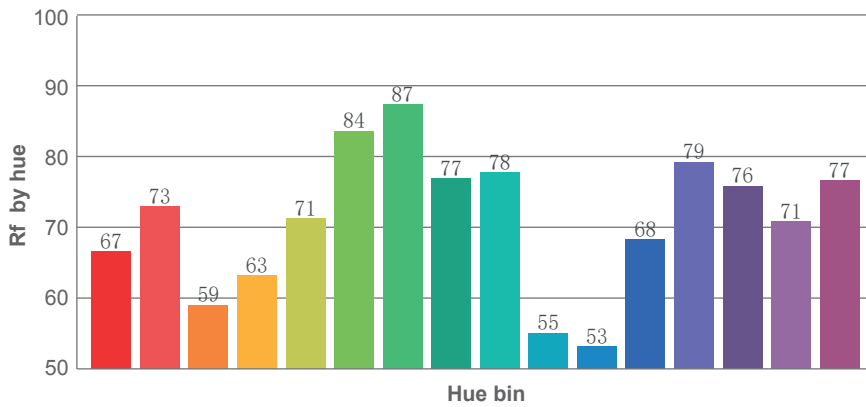
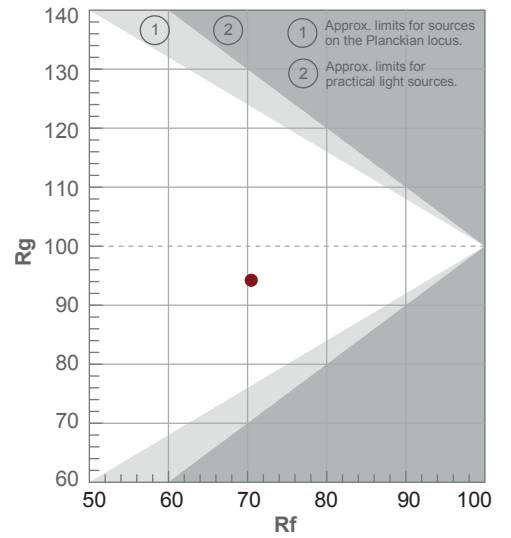


# TM-30 DETAILS

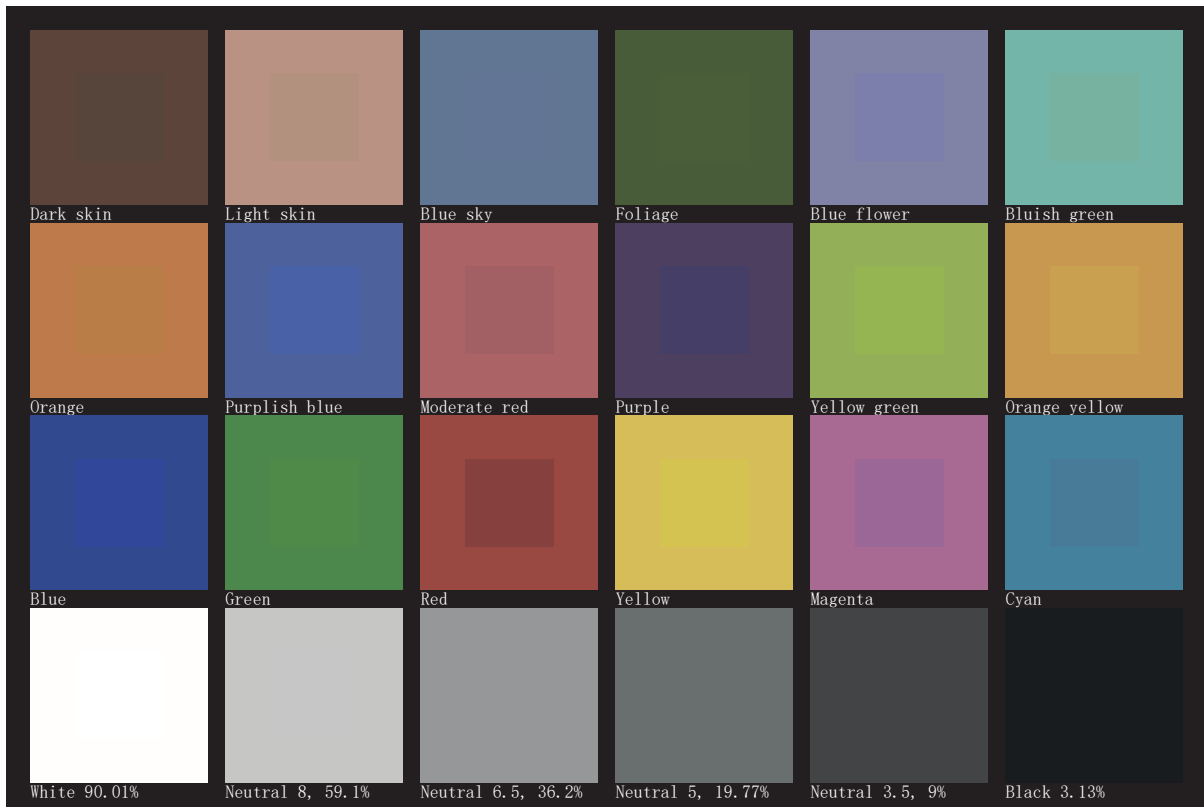
**Rf 70.5**  
Fidelity index Rf

**Rg 94.2**  
Gamut index Rg

Hue Bin	R <sub>f</sub>	Shifts (%)	
		Chroma	Hue
1	67	-18%	-4%
2	73	-14%	10%
3	59	-7%	23%
4	63	4%	23%
5	71	13%	14%
6	84	10%	-2%
7	87	0%	-8%
8	77	-11%	-9%
9	78	-19%	4%
10	55	-16%	23%
11	53	-4%	29%
12	68	5%	21%
13	79	15%	8%
14	76	12%	-5%
15	71	9%	-25%
16	77	-5%	-13%



# TLCI 47







**AYRTON**

Digital Lighting