



NANDO 502 WASH

PHOTOMETRY



AYRTON

Digital Lighting

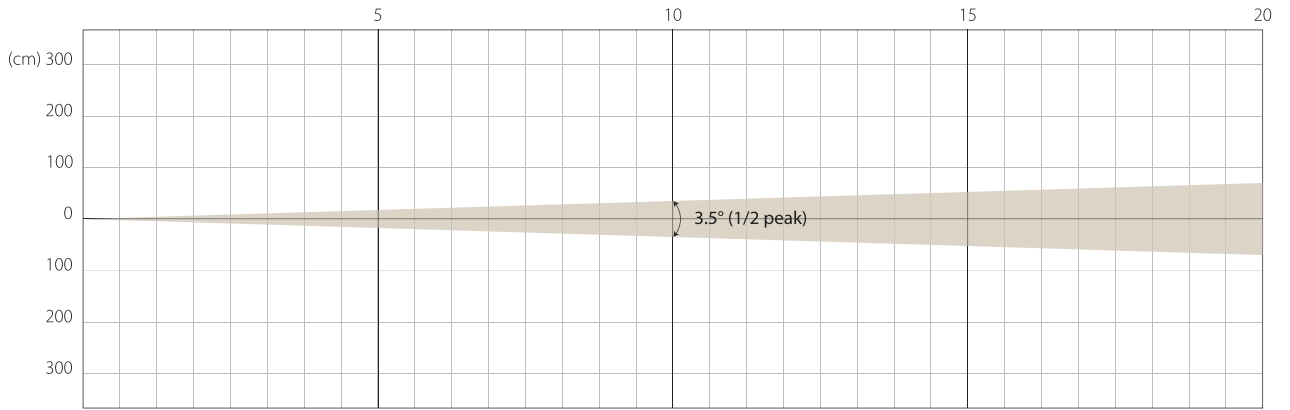


Total Flux	10,000 lm (Sphere, fan mode Stage, wide zoom)		
CCT balanced white	6500 K (±500 K)		
Ra balanced white	77 (±2)		
TLCI balanced white	66		
TM-30 balanced white	Rf: 82,8 Rg: 112,3		
Fan Mode	Noise Level (dBA)	by Goniometer (lm)	by Sphere (lm)
Auto	40.2	7,221	9,012
Stage	46.1	7,848	9,842
Silence	35.2	5,386	7,182
Super Silence	32.4	3,192	4,209
Note: noise measured @1m distance, static status, ambient 31 dBA.			
Voltage / Power	100-240V, 50-60Hz	550 W	
Fixture Dimension / Weight	340 x 474 x 268 mm	15.6 kg	
Packing Dimension / Weight	400 x 565 x 340 mm	23.1 kg	

AUTO MODE

MIN ZOOM

BEAM OPENING

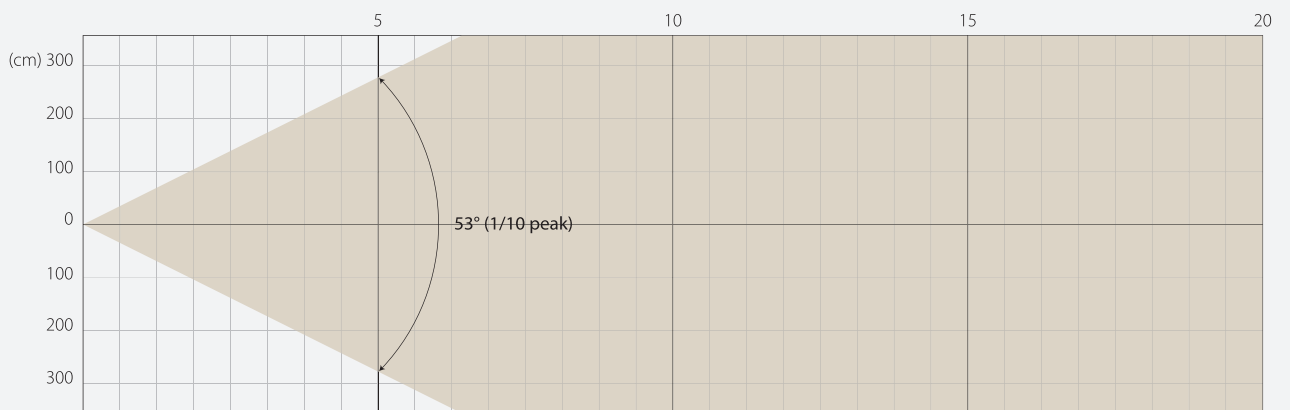


INTENSITY

Distance (m)	5		10		15		20	
	lux	diameter	lux	diameter	lux	diameter	lux	diameter
Red	7060	0,35	1765	0,7	784	1,05	441	1,4
Green	15029	"	3757	"	1670	"	939	"
Blue	3257	"	814	"	362	"	204	"
Lime	19496	"	4874	"	2166	"	1218	"
RGB-L	37152	"	9288	"	4128	"	2322	"

MAX ZOOM

BEAM OPENING



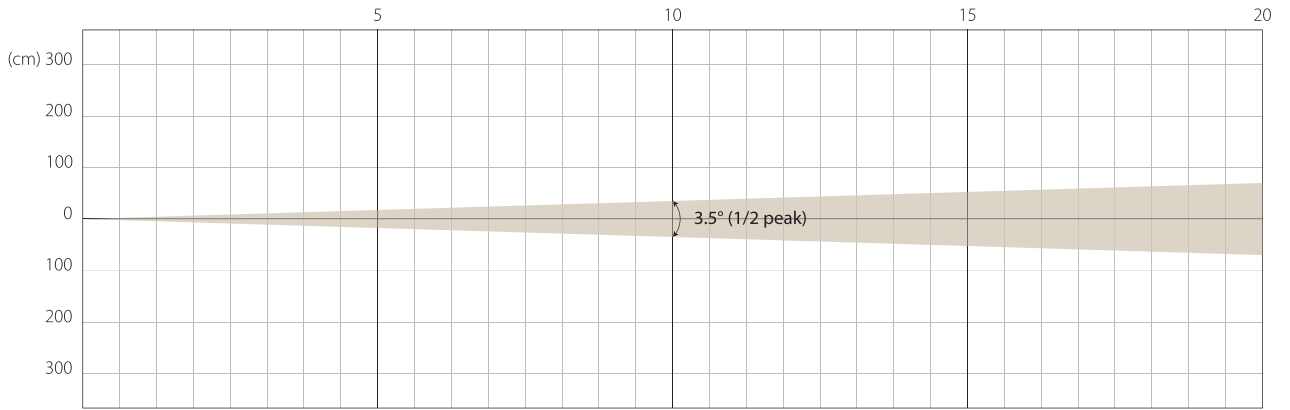
INTENSITY

Distance (m)	5		10		15		20	
	lux	diameter	lux	diameter	lux	diameter	lux	diameter
Red	144	5,54	36	11,09	16	16,63	9	22,17
Green	291	"	73	"	32	"	18	"
Blue	65	"	16	"	7	"	4	"
Lime	362	"	91	"	40	"	23	"
RGB-L	730	"	182	"	81	"	46	"

STAGE MODE

MIN ZOOM

BEAM OPENING

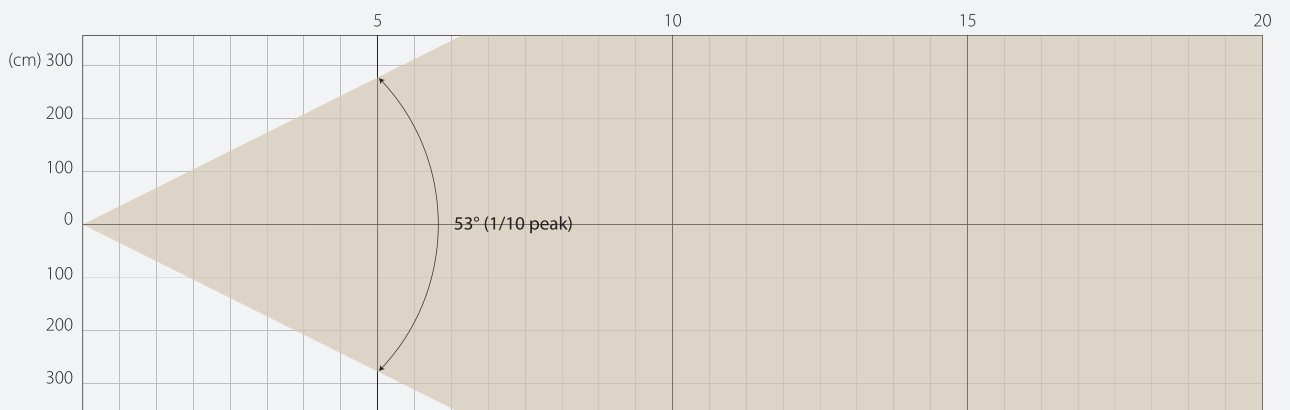


INTENSITY

Distance (m)	5		10		15		20	
	lux	diameter	lux	diameter	lux	diameter	lux	diameter
Red	7154	0,35	1789	0,7	795	1,05	447	1,4
Green	15323	"	3831	"	1703	"	958	"
Blue	3248	"	812	"	361	"	203	"
Lime	19444	"	4861	"	2160	"	1215	"
RGB-L	39095	"	9774	"	4344	"	2443	"

MAX ZOOM

BEAM OPENING



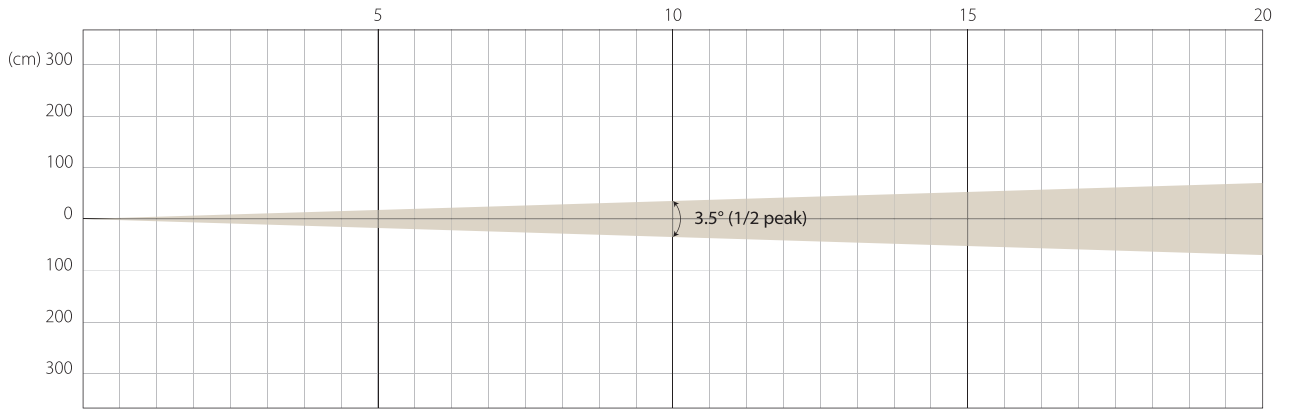
INTENSITY

Distance (m)	5		10		15		20	
	lux	diameter	lux	diameter	lux	diameter	lux	diameter
Red	128	5,54	32	11,09	14	16,63	8	22,17
Green	289	"	72	"	32	"	18	"
Blue	64	"	16	"	7	"	4	"
Lime	360	"	90	"	40	"	22	"
RGB-L	741	"	185	"	82	"	46	"

SILENCE MODE

MIN ZOOM

BEAM OPENING

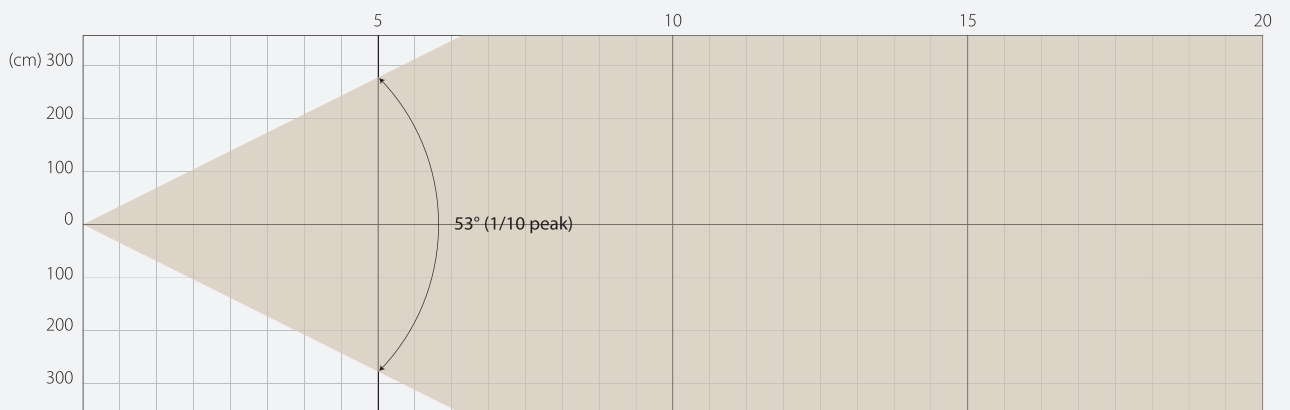


INTENSITY

Distance (m)	5		10		15		20	
	lux	diameter	lux	diameter	lux	diameter	lux	diameter
Red	5122	0,35	1280	0,7	569	1,05	320	1,4
Green	10937	"	2734	"	1215	"	684	"
Blue	2327	"	582	"	259	"	145	"
Lime	14028	"	3507	"	1559	"	877	"
RGB-L	28444	"	7111	"	3160	"	1778	"

MAX ZOOM

BEAM OPENING



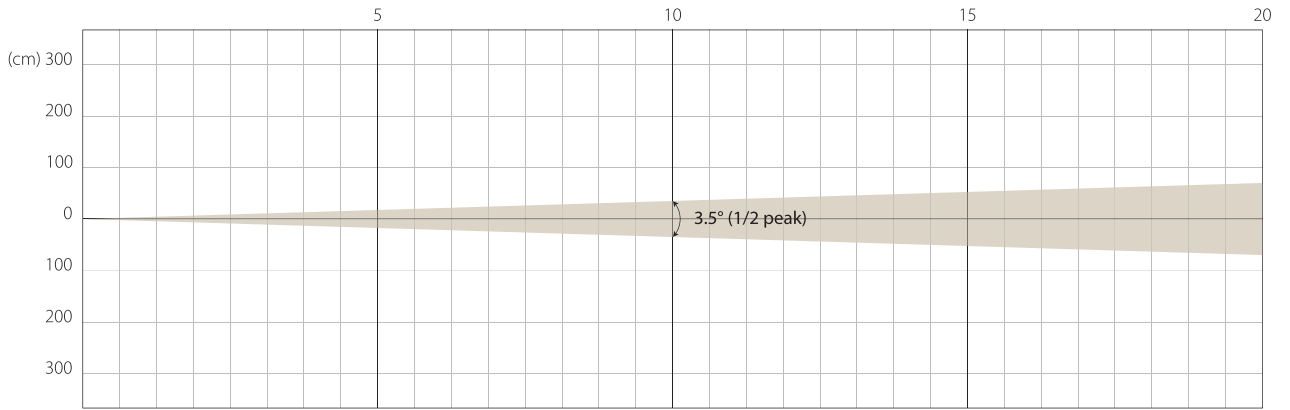
INTENSITY

Distance (m)	5		10		15		20	
	lux	diameter	lux	diameter	lux	diameter	lux	diameter
Red	101	5,54	25	11,09	11	16,63	6	22,17
Green	208	"	52	"	23	"	13	"
Blue	46	"	12	"	5	"	3	"
Lime	237	"	59	"	26	"	15	"
RGB-L	536	"	134	"	60	"	33	"

SUPER SILENCE MODE

MIN ZOOM

BEAM OPENING

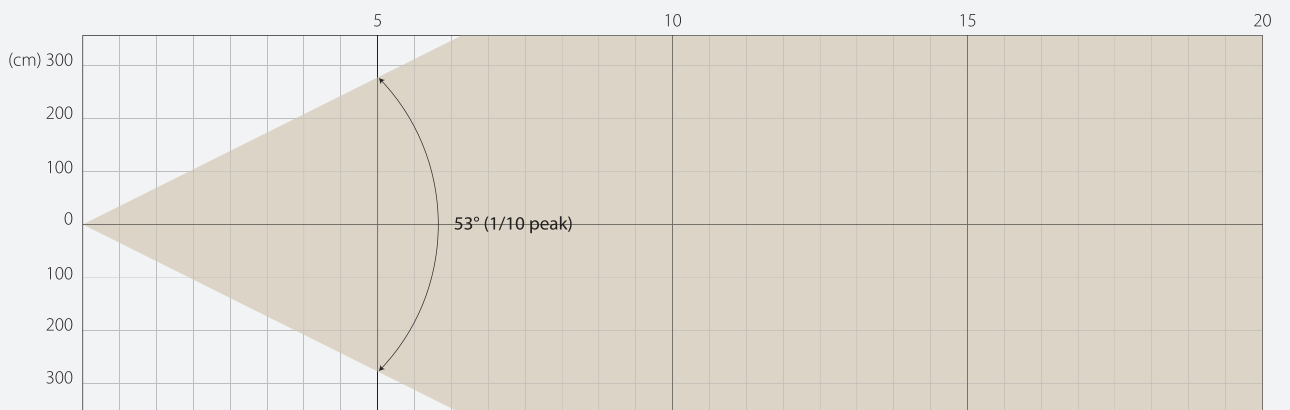


INTENSITY

Distance (m)	5		10		15		20	
	lux	diameter	lux	diameter	lux	diameter	lux	diameter
Red	3092	0,35	773	0,7	344	1,05	193	1,4
Green	6170	"	1543	"	686	"	386	"
Blue	1329	"	332	"	148	"	83	"
Lime	8088	"	2022	"	899	"	506	"
RGB-L	16309	"	4077	"	1812	"	1019	"

MAX ZOOM

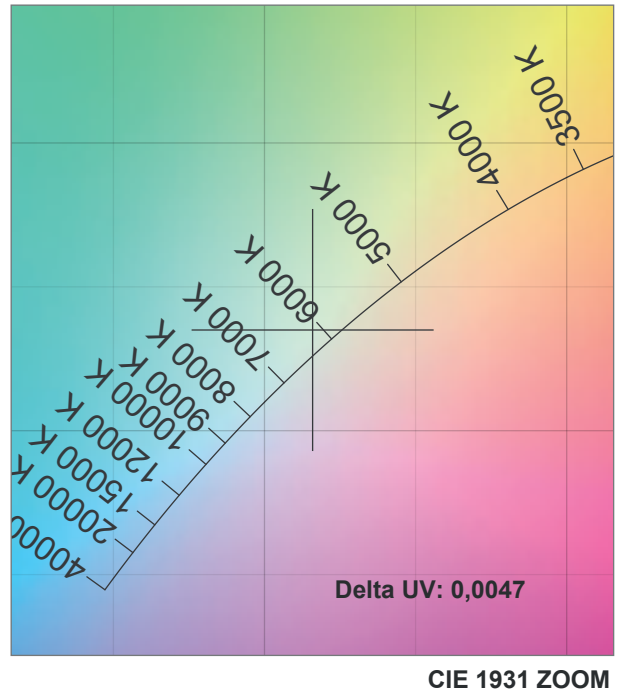
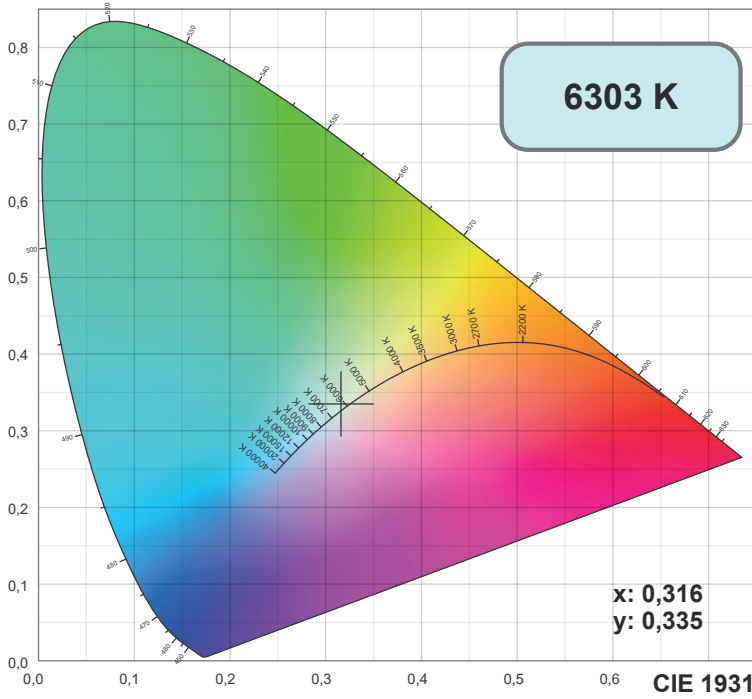
BEAM OPENING



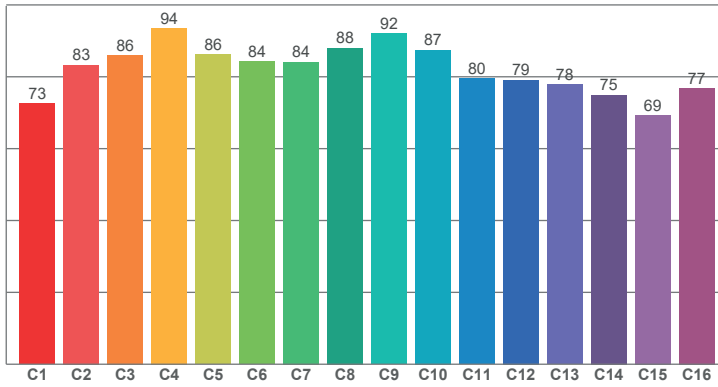
INTENSITY

Distance (m)	5		10		15		20	
	lux	diameter	lux	diameter	lux	diameter	lux	diameter
Red	60	5,54	15	11,09	7	16,63	4	22,17
Green	120	"	30	"	13	"	7	"
Blue	26	"	7	"	3	"	2	"
Lime	150	"	37	"	17	"	9	"
RGB-L	316	"	79	"	35	"	20	"

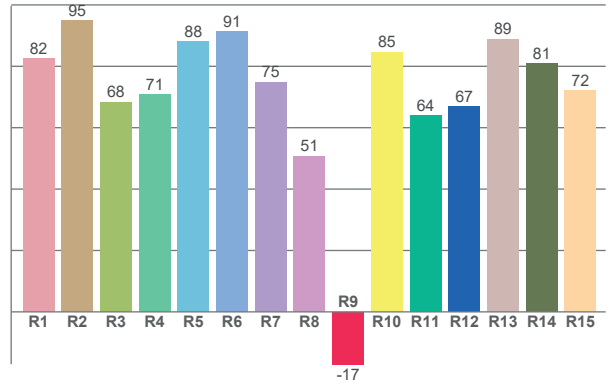
COLOR DETAILS



TM30: 82,8



CRI: 77,7 (R1-R8)



CRI R values, only R1-R8 are used to calculate final CRI value

R1	R2	R3	R4	R5	R6	R7	R8	R9	R10	R11	R12	R13	R14	R15
82,46	94,92	68,41	70,92	88,05	91,38	74,91	50,80	-17,06	84,70	63,90	66,80	88,92	80,94	72,24

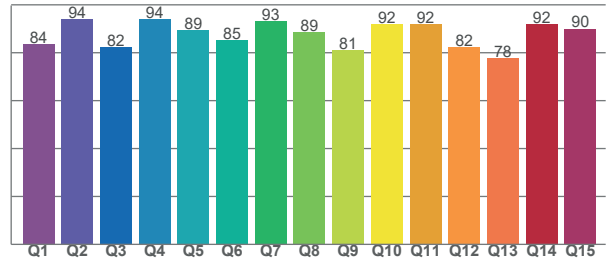
TM30 C values, 16 binned values out of total of 99 C values

C1	C2	C3	C4	C5	C6	C7	C8	C9	C10	C11	C12	C13	C14	C15	C16
72,63	83,33	86,02	93,56	86,17	84,23	84,13	88,01	92,07	87,49	79,53	79,12	77,79	74,98	69,34	76,86

CQS Q values

Q1	Q2	Q3	Q4	Q5	Q6	Q7	Q8	Q9	Q10	Q11	Q12	Q13	Q14	Q15
83,59	93,85	82,44	94,19	89,49	85,09	93,23	88,57	81,18	91,97	92,07	82,25	77,78	91,74	90,04

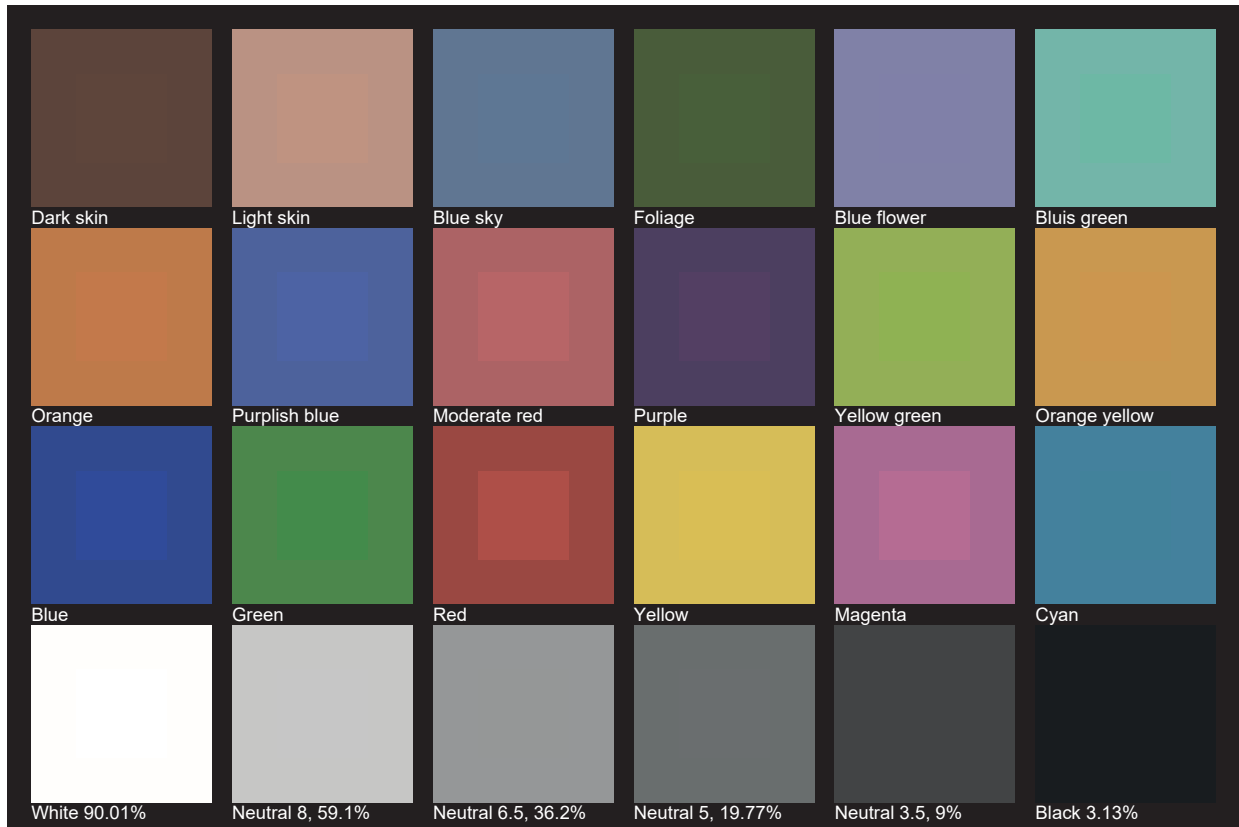
CQS: 86,8



Color parameters

CCT	CRI	CRI R9	TM30 Rf	TM30 Rg	CQS	x	y	u	v	Duv
6303 K	77,7	-17,1	82,8	112,3	86,8	0,3	0,3	0,2	0,3	0,0014

TLCI 66





AYRTON

Digital Lighting